

RECHARGEABLE VACUUM CLEANER

Model VAC003

Simply 



Product Overview

Thank you for choosing the VAC003 Rechargeable Vacuum Cleaner.

This lightweight, cordless vacuum is designed for quick and convenient cleaning in your home, office, or car.

Key Features

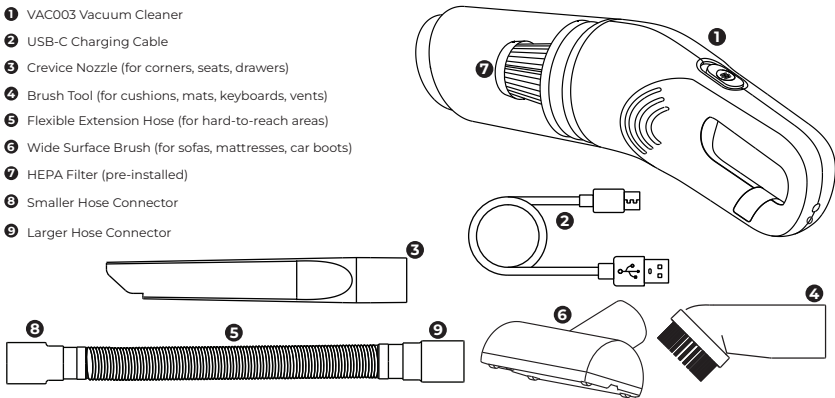
- Powerful suction with high-speed motor (up to 40,000rpm).
- Compact, lightweight design (500g) for easy handling.
- Long-lasting rechargeable lithium-ion battery.
- Large 350ml dust container with washable HEPA filter.
- Multiple attachments for different cleaning needs.
- USB-C charging for convenience.

Technical Specifications

- Dimensions: 337 × 130 × 88mm
- Weight: 500g
- Battery: 7.4V – 2000mAh lithium-ion
- Charging input: 5V – 1A (USB-C)
- Rated power: 120W (5000pa suction)
- Dust container capacity: 350ml
- Filter: Washable HEPA

Package Contents

- ❶ VAC003 Vacuum Cleaner
- ❷ USB-C Charging Cable
- ❸ Crevice Nozzle (for corners, seats, drawers)
- ❹ Brush Tool (for cushions, mats, keyboards, vents)
- ❺ Flexible Extension Hose (for hard-to-reach areas)
- ❻ Wide Surface Brush (for sofas, mattresses, car boots)
- ❼ HEPA Filter (pre-installed)
- ❽ Smaller Hose Connector
- ❾ Larger Hose Connector

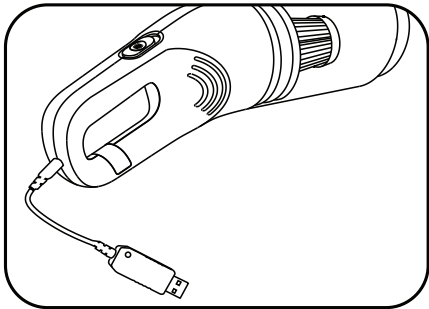


Charging the Vacuum

- 1 Ensure the device is switched off.
- 2 Connect the supplied USB-C cable to the charging port.
- 3 Plug into a suitable 5V – 1A USB power adapter (not included).
- 4 The LED indicator shows charging status:
 - Red = Charging
 - Blue = Fully charged
- 5 A full charge takes approximately 3–4 hours.



**DO NOT USE THE VACUUM
WHILE CHARGING.**



How to Use

❶ Attach the appropriate accessory

- Use the provided connectors for hose attachment:
 - a. Pull the connectors apart.
 - b. Attach the smaller end to the hose and the larger end to the vacuum.
 - c. Fit your chosen accessory onto the smaller connector.

❷ Switch on the vacuum

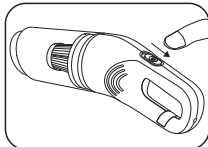
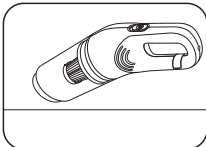
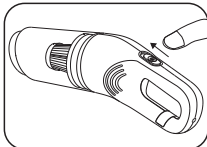
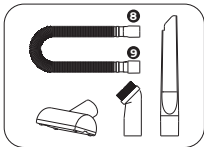
- Slide the power switch to the ON position.

❸ Begin cleaning

- Move the vacuum smoothly over the surface.

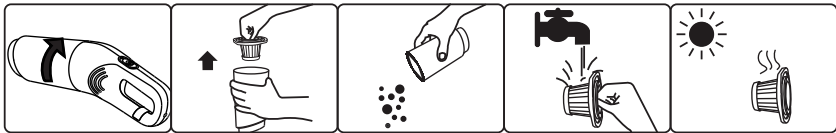
❹ Switch off after use

- Slide the power switch to the OFF position



Emptying & Cleaning the Dust Container

- ➊ Rotate the dust container anti-clockwise to detach.
- ➋ Remove the HEPA filter and empty debris into a bin.
- ➌ Rinse the filter under running water if required.
 - **NOTE: Ensure the filter is completely dry before reinserting.**
- ➍ Reassemble by replacing the filter and securing the dust container.



Safety Information

- ➊ Read this manual before use and retain for future reference.
- ➋ Do not vacuum liquids, flammable substances, toxic materials, or hot ash.
- ➌ Keep hair, clothing, fingers, and body parts away from moving parts.
- ➍ Do not use the vacuum if the filter, dust container, or air vents are blocked.
- ➎ Do not expose to water, heat sources, or direct sunlight.
- ➏ Always switch off before cleaning, charging or storing.
- ➐ Keep out of reach of children under 10 years old.
- ➑ Only use accessories supplied or recommended.
- ➒ If damaged, stop using immediately and contact customer support.

Battery & Recycling

- ➊ Built-in lithium-ion battery (not user-replaceable).
- ➋ Recharge regularly; do not allow the battery to fully discharge.
- ➌ At end of life, recycle the appliance and battery in accordance with local WEEE regulations.

Troubleshooting

Problem	Possible Cause	Solution
Vacuum won't start	Battery empty / not charged	Recharge fully
Weak suction	Dust container or filter clogged	Empty and clean filter
Won't charge	Cable not connected properly	Check connections and power source

Customer Support & Compliance

For help, accessories, or service enquiries:

✉ Email: info@simply-brands.com

🌐 Website: www.simply-brands.com

This product complies with:

- EMC Directive 2014/30/EU
- Low Voltage Directive 2014/35/EU
- RoHS Directive 2011/65/EU (with amendment EU 2015/863)

Manufacturer: **Simply Brands Ltd**

Made in China